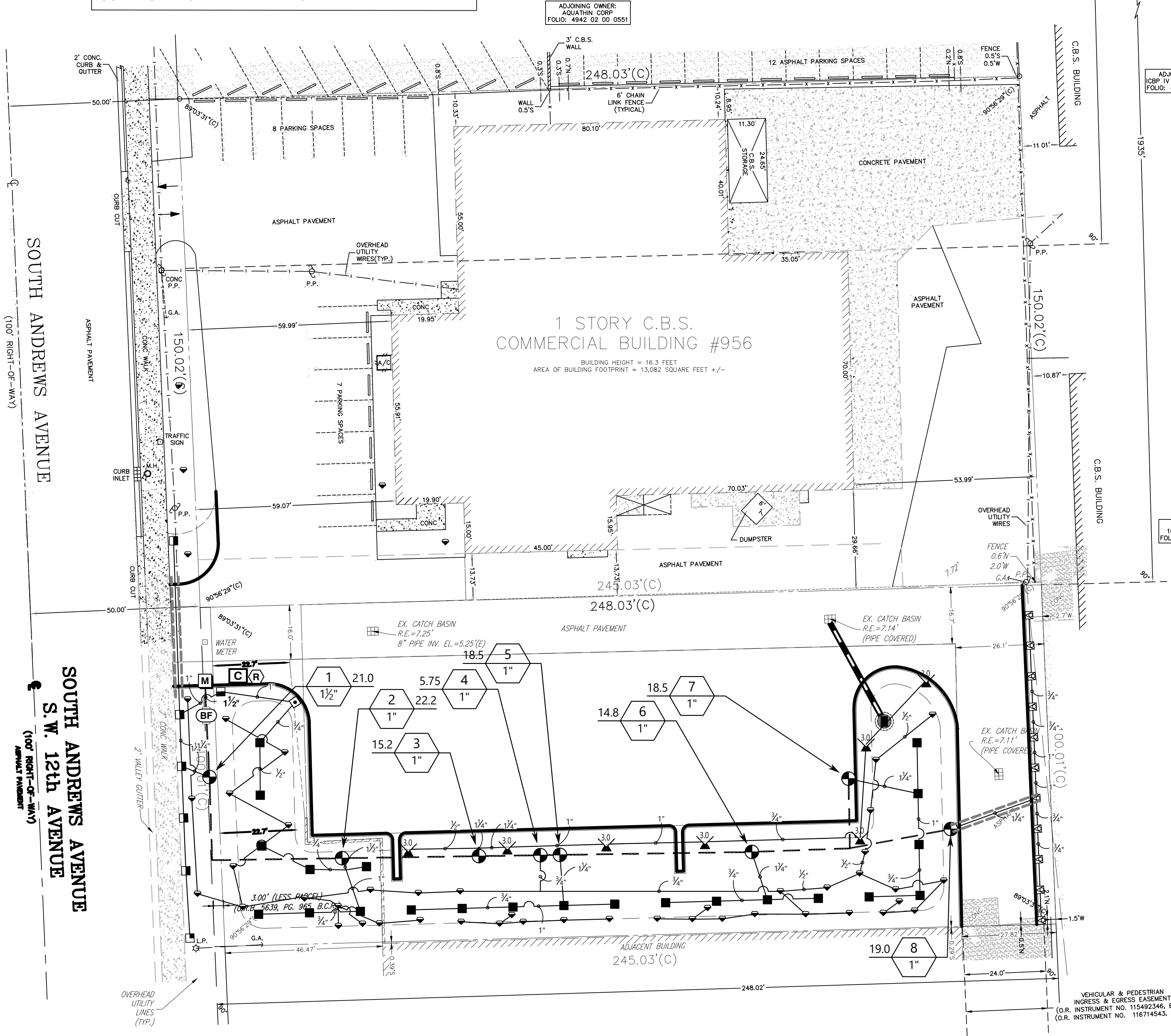


IRRIGATION FOR EXISTING BUILDING TO BE INSPECTED AND REPAIRED, IF NECESSARY, BY IRRIGATION CONTRACTOR. SYSTEM SHOULD BE IN GOOD WORKING ORDER AND PROVIDE REQUIRED COVERAGE. ADD BUBBLERS AT NEW TREE LOCATIONS AS REQUIRED BY CODE. SEE IRRIGATION SCHEDULE FOR MAKE AND MODEL.

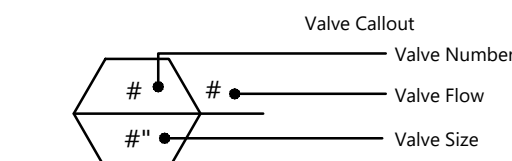


IRRIGATION SYSTEM TO PROVIDE 100% COVERAGE WITH 50% OVERLAP.

PLEASE REFER TO SHEET IR.02 FOR IRRIGATION DETAILS AND NOTES

IRRIGATION SCHEDULE

SYMBOL	MANUFACTURER/MODEL/DESCRIPTION	QTY	PSI	GPM	RADIUS
	Rain Bird 1806-PRS 15 Strip Series Turf Spray 6" pop up with pressure regulator.	11	30		
	Rain Bird 1806-PRS 15 Series MPR Turf Spray 6" pop up with pressure regulator.	29	30		
	Rain Bird 1806-PRS ADJ Turf Spray 6" pop up with pressure regulator.	1	30		
	Rain Bird 1802-1400 Flood Flood Bubbler 2in. pop up, install w/ PA-80 adapter.	48	40		
SYMBOL	MANUFACTURER/MODEL/DESCRIPTION	QTY	PSI	GPM	RADIUS
	Rain Bird 3500-S 3.0 Shrub Rotor, adjustable and full circle	7	25	2.17	29'
SYMBOL	MANUFACTURER/MODEL/DESCRIPTION	QTY			
	Rain Bird PESB-PRS-D 1-1/2" 1in., 1-1/2in., 2in., 3in., 3in. Plastic Industrial Remote Control Valve. Low Flow Operating Capability, Globe Configuration, With Pressure Regulating Module, and Scrubber Technology for Reliable Performance in Dirty Water Irrigation Applications.	1			
	Rain Bird PESB-PRS-D 1" 1in., 1-1/2in., 2in., 3in., 3in. Plastic Industrial Remote Control Valve. Low Flow Operating Capability, Globe Configuration, With Pressure Regulating Module, and Scrubber Technology for Reliable Performance in Dirty Water Irrigation Applications.	7			
	Febcu 765 1" Pressure Vacuum Breaker, brass with ball valve SOV. Install 12in. above highest downstream outlet and the highest point in the downstream piping.	1			
	Rain Bird ESPLXME2P-LXMM-LXMPED 12 Station, Traditionally-Wired Commercial Controller w/ Factory Installed PRO Smart Module. Indoor/Outdoor, Plastic Wall-Mount Enclosure. Install in LXMM-LXMPED Powder Coated, Metal Wall-Mounted Cabinet w/ Pedestal.	1			
	Rain Bird RSD-BEX Rain Sensor, with metal latching bracket, extension wire.	1			
	Water Meter 3/4" New 3/4" Water Meter	1			
	Irrigation Lateral Line: PVC Class 160 SDR 26	26.2 lf			
	Irrigation Lateral Line: PVC Class 160 SDR 26 1/2"	887.7 lf			
	Irrigation Lateral Line: PVC Class 160 SDR 26 3/4"	248.8 lf			
	Irrigation Lateral Line: PVC Class 160 SDR 26 1"	157.9 lf			
	Irrigation Lateral Line: PVC Class 160 SDR 26 1 1/4"	112.6 lf			
	Irrigation Lateral Line: PVC Class 160 SDR 26 1 1/2"	3.6 lf			
	Irrigation Mainline: PVC Class 200 SDR 21 1 1/2"	291.7 lf			
	Pipe Sleeve: PVC Schedule 80 Typical pipe sleeve for irrigation pipe. Pipe sleeve size shall allow for irrigation piping and their related couplings to easily slide through sleeving material. Extend sleeves 18 inches beyond edges of paving or construction.	62.1 lf			



VALVE SCHEDULE

NUMBER	MODEL	SIZE	TYPE	GPM	HEADS	PIPE	WIRE	DESIGN PSI	FRICTION LOSS	PSI	PSI @ POC	PRECIP
1	Rain Bird PESB-PRS-D	1-1/2"	Turf Spray	20.95	10	199.6	38.7	30	1.52	35.4	47.2	0.78 in/h
2	Rain Bird PESB-PRS-D	1"	Turf Spray	22.2	6	79.1	101.5	30	0.96	34.5	47.9	0.85 in/h
3	Rain Bird PESB-PRS-D	1"	Shrub Rotor	15.19	7	189.7	141.8	25	2.72	30.1	38.2	0.55 in/h
4	Rain Bird PESB-PRS-D	1"	Bubbler	5.75	23	403.6	159.9	40	1.4	43.1	47.2	0.87 in/h
5	Rain Bird PESB-PRS-D	1"	Turf Spray	18.5	5	75.0	165.7	30	1.14	33.9	44.6	0.73 in/h
6	Rain Bird PESB-PRS-D	1"	Turf Spray	14.8	4	59.8	222.2	30	0.84	33.2	41.4	0.71 in/h
7	Rain Bird PESB-PRS-D	1"	Turf Spray	18.5	5	80.9	271.7	30	1.21	33.9	45.5	0.74 in/h
8	Rain Bird PESB-PRS-D	1"	Turf Spray	19.03	11	115.8	281.4	30	1.09	33.9	45.9	1.9 in/h
	Common Wire						291.7					

CRITICAL ANALYSIS

Generated: 2025-10-23 14:09

P.O.C. NUMBER: 02

Water Source Information: New 3/4" Water Meter

FLOW AVAILABLE

Water Meter Size: 3/4"

Flow Available: 22.5 GPM

PRESSURE AVAILABLE

Static Pressure at POC: 50 PSI

Elevation Change: 0.00 ft

Service Line Size: 3"

Length of Service Line: 20 ft

Pressure Available: 50 PSI

DESIGN ANALYSIS

Maximum Station Flow: 22.2 GPM

Flow Available at POC: 22.5 GPM

Residual Flow Available: 0.3 GPM

Critical Station: 2

Design Pressure: 30 PSI

Friction Loss: 0.96 PSI

Fittings Loss: 0 PSI

Elevation Loss: 0 PSI

Loss through Valve: 3.49 PSI

Pressure Req. at Critical Station: 34.5 PSI

Loss for Fittings: 0 PSI

Loss for Main Line: 0.91 PSI

Loss for POC to Valve Elevation: 0 PSI

Loss for Backflow: 4.38 PSI

Loss for Water Meter: 8.17 PSI

Critical Station Pressure at POC: 47.9 PSI

Pressure Available: 50 PSI

Residual Pressure Available: 2.09 PSI

WATERING SCHEDULE

NUMBER	MODEL	TYPE	PRECIP	IN./WEEK	MIN./WEEK	GAL./WEEK	GAL./DAY
1	Rain Bird PESB-PRS-D	Turf Spray	0.78 in/h	1	77	1,613	
2	Rain Bird PESB-PRS-D	Turf Spray	0.85 in/h	1	71	1,576	
3	Rain Bird PESB-PRS-D	Shrub Rotor	0.55 in/h	1	109	1,656	
4	Rain Bird PESB-PRS-D	Bubbler	0.87 in/h	1	70	403	
5	Rain Bird PESB-PRS-D	Turf Spray	0.73 in/h	1	82	1,517	
6	Rain Bird PESB-PRS-D	Turf Spray	0.71 in/h	1	85	1,258	
7	Rain Bird PESB-PRS-D	Turf Spray	0.74 in/h	1	81	1,499	
8	Rain Bird PESB-PRS-D	Turf Spray	1.9 in/h	1	32	609	
	TOTALS:				607	10,130	



LOCUS MAP
NTS.

THIS DOCUMENT, AS AN INSTRUMENT OF SERVICE, IS THE SOLE PROPERTY OF WDA DESIGN GROUP, INC. ITS USE BY THE OWNER FOR OTHER PROJECTS OR FOR COMPLETION OF THIS PROJECT BY OTHERS IS STRICTLY FORBIDDEN. DISTRIBUTION IN CONNECTION WITH THIS PROJECT SHALL NOT BE CONSTRUED AS PUBLICATION IN DEROGATION OF WDA DESIGN GROUP'S RIGHTS. ©2024, WDA DESIGN GROUP, INC.

2	0/29/2025	2nd DRC COMMENTS	MDG
1	9/15/2025	INITIAL DRC COMMENTS	MDG
A		INITIAL ISSUE	
REV.	DATE	DESCRIPTION	INIT.



PREPARED BY:

WDA
DESIGN
GROUP

31 EAST MAIN STREET WESTBOROUGH, MA |
508.366.6552
WDA-DG.COM

OWNER:

JOEFFRAN
INVESTMENTS

PREPARED FOR:

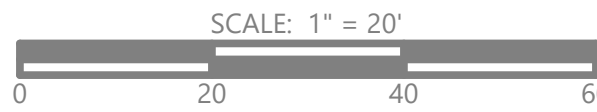
THOMAS ENGINEERING
GROUP
6300 NW 31ST AVE
FORT LAUDERDALE, FL 33309
BROWARD COUTY, FL

TITLE:

IRRIGATION PLAN

980 SW 12TH AVE
POMPANO BEACH, FL

DRC



JOB NO.:	1632	DATE:	04/15/25
DWN. BY:	MDG	SHEET:	
CHK'D BY:	MDG		IR.01